

# Trade Scales Limited



## Ishida Platform Weighing Systems

### IWX

#### Features

Constructed of waterproof high quality stainless steel, the versatile IW-Series is ideal for food processing applications - from agricultural and fishery industries to wholesaling and retailing industries

#### **Waterproof Design Conforms to IP-67**

The IW-Series meets IP-67 requirements, even allowing washdown for highest sanitary conditions.

#### **Sturdy, Stain, Chemical, and Corrosion Resistant Waterproof Load Cell Conforms to IP-67.**

This outstandingly durable weighing unit can be washed and sprayed with water, allowing for easy cleaning. For the first time in the industry the load cell has been coated with acrylic resin to make it completely waterproof.



#### **Large Fluorescent Display**

- Large, clear fluorescent display (character height: over 30 mm)
- Featuring large digits, the bright fluorescent display provides superior visibility under any conditions.
- Has weight checking function for accurate weighing.
- Upper and lower weight limits can be set - the scale alerts the operator when a product is not within the specified range



#### Specifications

Model	IWX-30
Capacity	30 kg
Minimum Graduation	0.005 kg (0-15 kg) 0.01 kg (15-30 kg) Multi interval
Display	Fluorescent
Weight Check	over, accept, under
Weight	16.8 kg
Waterproof Construction	IP-67
Power Supply	AC 100 V ~ 240 V +/-10 %, 50/60 Hz
Standard Interface	External buzzer or RS232C and relay output signal (except IWB-Series)
Option	RS232C cable, relay output box (except IWB-Series)
Safety Approval	UL, CE, c-Tick

\*1. Console for IWQ series is IP-65.  
\*2. Battery performance varies depending on its manufacturer, preservation, temperature, and condition of usage.

# Trade Scales Limited

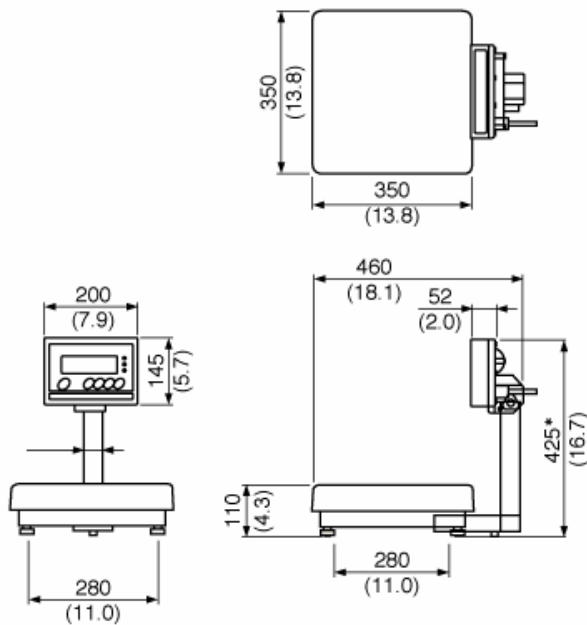
Model	IWX-150
Capacity	150 kg
Minimum Graduation	0.02 kg (0-60 kg) 0.05 kg (60-150 kg)
Display	Fluorescent
Weight Check	over, accept, under
Weight	4.7 kg
Waterproof Construction	IP-67
Power Supply	AC 100 V ~ 240 V +/-10 %, 50/60 Hz
Standard Interface	External buzzer or RS232C and relay output signal (except IWB-Series)
Option	RS232C cable, relay output box (except IWB-Series)
Safety Approval	UL, CE, c-Tick

\*1. Console for IWQ series is IP-65.

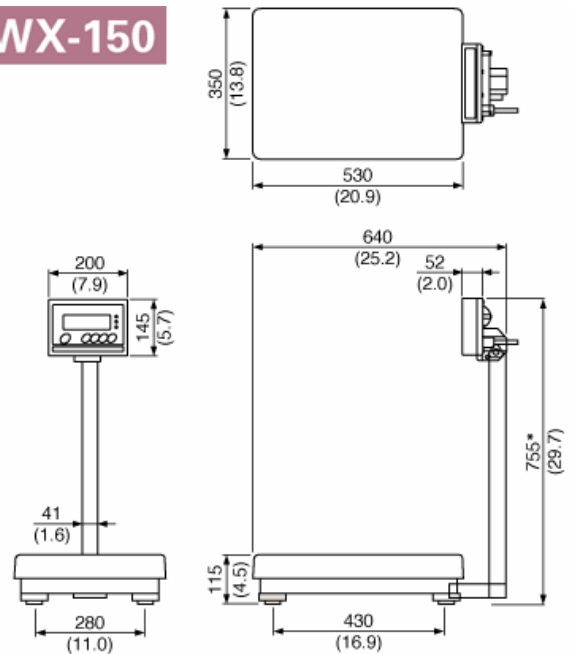
\*2. Battery performance varies depending on its manufacturer, preservation, temperature, and condition of usage.

## Dimensions

### IWX-30



### IWX-150



•Height in Australian specification

IWX-30: 755 mm (29.7 in.) / IWX-150: 900 mm (35.4 in.)