



Desktop Printers

## DT2x / DT4x

Discover how powerful a Simple of Compact Barcode Printer can be.

DT2x / DT4x are both ultra-light, compact for best space utilization and support multiple communication ports; they are effective and multitasking for printing retail, warehouses, logistic & transportation, health care labels and tags.



Enhanced label feeding mechanism and instant label detection.



- 16MB SDRAM and 4 / 8 MB Flash memory- including 2 / 4 MB user-available memory storage for downloadable objects.
- Print speed: Up to 7"/177 mm per second
- Supports Ethernet, Serial and USB ports.

# GoDEX

# Specification

## DT2x / DT4x

### Desktop Printer

Model	DT2x	DT4x
<b>Print Method</b>	Direct Thermal	
<b>Resolution</b>	203 dpi (8 dots/mm)	
<b>Print Speed</b>	7 IPS (177 mm/s)**	
<b>Print Width</b>	2.12" (54 mm)	4.25" (108 mm)
<b>Print Length</b>	Min. 0.16" (4 mm)**; Max. 68" (1727 mm)	
<b>Processor</b>	32 Bit RISC CPU	
<b>Memory Flash</b>	4 MB Flash (2 MB for user storage)	8 MB Flash (4 MB for user storage)
<b>SDRAM</b>	16 MB	
<b>Sensor Type</b>	Adjustable reflective sensor.	Adjustable reflective sensor. Fixed transmissive sensor, central aligned.
<b>Media Types</b>	Continuous form, gap labels, black mark sensing, and punched hole; label length set by auto sensing or programming	
<b>Width</b>	Min. 0.6" (15 mm) – Max. 2.36" (60 mm)	Min. 1" (25.4 mm) – Max. 4.64" (118 mm)
<b>Thickness</b>	Min. 0.003" (0.06 mm) – Max. 0.008" (0.20 mm)	
<b>Label Roll Diameter</b>	Max. 5" (127 mm)	
<b>Core Diameter</b>	1" (25.4 mm), 1.5" (38.1mm)	
<b>Printer Language</b>	EZPL, GEPL, GZPL auto switch	
<b>Software Label Design Software</b>	GoLabel (for EZPL only)	
<b>Driver</b>	MAC, Linux, Windows 2000 / XP / VISTA / Windows 7 / Windows 8.1	
<b>DLL</b>	Win CE, .NET, Android, Windows Mobile, Windows 2000 / XP / VISTA / Windows 7 / Windows 8.1	
<b>Resident Fonts Bitmap Fonts</b>	6, 8, 10, 12, 14, 18, 24, 30, 16X26 and OCR A & B Bitmap fonts 90°, 180°, 270° rotatable, single characters 90°, 180°, 270° rotatable Bitmap fonts 8 times expandable in horizontal and vertical directions	
<b>TTF Fonts</b>	CG Triumvirate™ (Bold / Italic / Underline ), 0°, 90°, 180°, 270° rotatable	
<b>Download Fonts Bitmap Fonts</b>	90°, 180°, 270° rotatable, single characters 90°, 180°, 270° rotatable	
<b>Asian Fonts</b>	16x16, 24x24, Traditional Chinese (BIG-5), Simplified Chinese (GB2312), Japanese (S-JIS), Korean (KS-X1001)	
<b>TTF Fonts</b>	90°, 180°, 270° rotatable and 8 times expandable in horizontal and vertical directions 90°, 180°, 270° rotatable	
<b>Barcodes 1-D Bar codes</b>	Code 39, Code 93, EAN 8 /13 (add on 2 & 5), UPC A / E (add on 2 & 5), 1 2 of 5 & 1 2 of 5 with Shipping Bearer Bars, Codabar, Code 128 (subset A, B, C), EAN 128, RPS 128, UCC 128, UCC / EAN-128 K-Mart, Random Weight, Post NET, ITF 14, China Postal Code, HIBC, MSI, Plessey, Telepen, FIM, GS1 DataBar, German Post Code, Planet 11 & 13 digit, Japanese Postnet, 1 2 of 5 with human readable check digit, Standard 2 of 5, Industrial 2 of 5, Logmars, Code 11, Code 49 and Cadablock	
<b>2-D Bar codes</b>	PDF417, Datamatrix code, MaxiCode, QR code, Micro PDF417, Micro QR code and Aztec code.	
<b>Code Pages</b>	CODEPAGE 437, 850, 851, 852, 855, 857, 860, 861, 862, 863, 865, 866, 869, 737 WINDOWS 1250, 1251, 1252, 1253, 1254, 1255, 1257 Unicode UTF8 \ UTF16BE \ UTF16LE	
<b>Graphics</b>	Resident graphic file types are BMP and PCX, other graphic formats are downloadable from the software	
<b>Interfaces</b>	USB 2.0 (B-Type) Serial port: RS-232 (DB-9) IEEE 802.3 10 / 100 Base-Tx Ethernet port (RJ-45)	
<b>Control Panel</b>	One Tri-color LED : Power (Green, Orange and Red) Function Key : FEED	
<b>Power</b>	Auto Switching 100-240V AC, 50-60Hz.	
<b>Real Time Clock</b>	Standard	
<b>Environment Operation Temperature</b>	41°F to 104°F (5°C to 40°C)	
<b>Storage Temperature</b>	-4°F to 122°F (-20°C to 50°C)	
<b>Humidity Operation</b>	30-85%, non-condensing.	
<b>Storage</b>	10-90%, non-condensing.	
<b>Agency Approvals</b>	CE (EMC), FCC Class A, CB, CCC, cUL	
<b>Dimension Length</b>	8.58" (218 mm)	8.58" (218 mm)
<b>Height</b>	6.77" (172 mm)	6.53" (166 mm)
<b>Width</b>	3.94" (100 mm)	6.61" (168 mm)
<b>Weight</b>	2.65 lbs (1.2 Kg) ,excluding consumables	3.3 lbs (1.5 Kg) ,excluding consumables
<b>Options &amp; Accessories</b>	Cutter module Label Dispenser External label roll holder for 10" (250 mm) O.D. label rolls External label rewinder	

\*\*Specifications are subject to change without notice. All company and/or product names are trademarks and/or registered trademarks of their respective owners.

Minimum print height and maximum print speed specification compliance can be dependent on non-standard material variables such as label type, thickness, spacing, liner construction, etc. Godex is pleased to test non-standard materials for minimum print height and maximum print speed capability.

# Applications

## Applications for Labels & Barcodes

DT2x / DT4x are the ultimate tool for barcode printings in any industry.



### Warehouses, Logistic & Transportation

Shelf labels, product serial number labels, inventory management, shipping labels, pallet labels, carton labels, etc.

### Health Care

Tube tags, pharmaceutical labels, patient identification, medical records and laboratory specimen tags.

### Retail

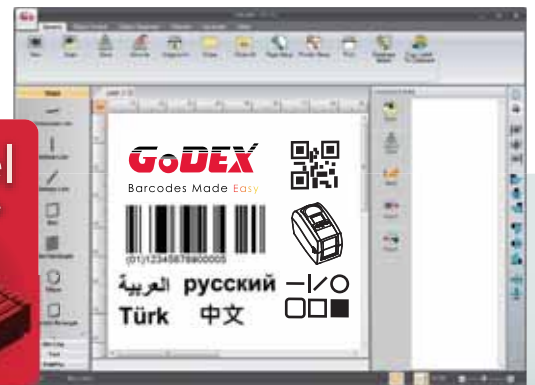
Price tags, content labels, jewelry labels, courier tracking label, receipts for registered mails, bills of landing (B / L), postage labels, etc.

## GoDEX LABEL DESIGN SOFTWARE

GoLabel Software / User Friendly

GoLabel is based on a WYSIWYG (what you see is what you get) user interface, makes everything so easy for you to create and print barcode labels. GoLabel is the first-choice label design software that you can't miss it!

Go visit [www.godexintl.com](http://www.godexintl.com) and download GoLabel to experience it!



## GoDEX RIBBONS

High quality original GoDEX thermal transfer ribbons

GoDEX offers premium thermal transfer ribbons that will fit most of your printing applications.

- Wax
- Wax/ Resin
- Resin
- Near Edge

